

Product Bulletin

Doc. No. 33961A01

New breathing valve holders

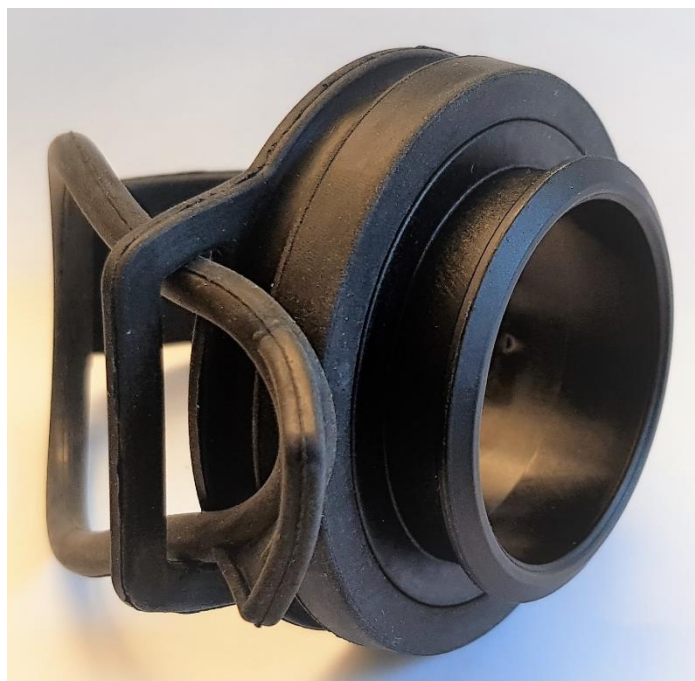
Announcement

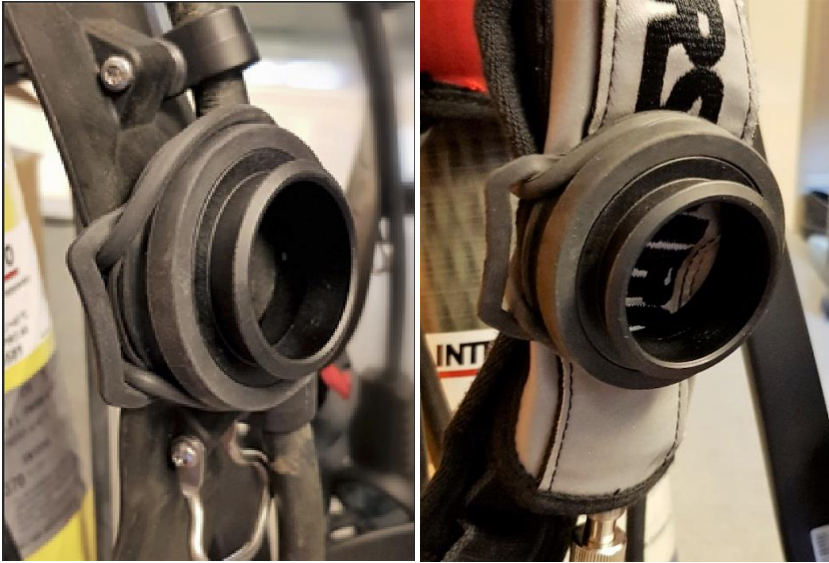
STOCKHOLM 2018

New breathing valve holders available for Inspire, ESA, PE (M45x3) and N (RD40) breathing valves. The holders are used to park the breathing valves when not connected to face mask.

Description

The new holders are flexible and possible to attach both on shoulder pads and hip belt on the harness. It can be used on both QSII and Incurve as well as Spiromatic 90U.





Part numbers:

- 34500-01 Breathing valve holder, N
- 34500-02 Breathing valve holder, PE
- 34500-03 Breathing valve holder, ESA
- 34500-04 Breathing valve holder, Inspire

The following breathing valve holders will be phased out.

Part numbers:

- 336290019 Breathing valve holder S-N
- 336290021 Breathing valve holder S-PE
- 336290025 Breathing valve holder S-ESA